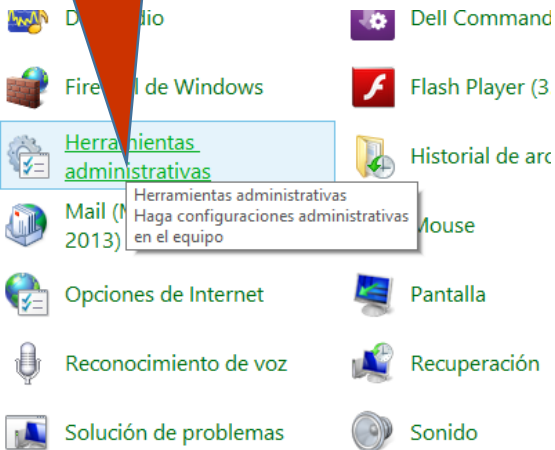
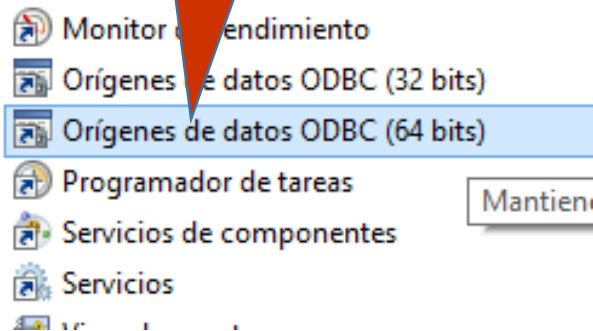


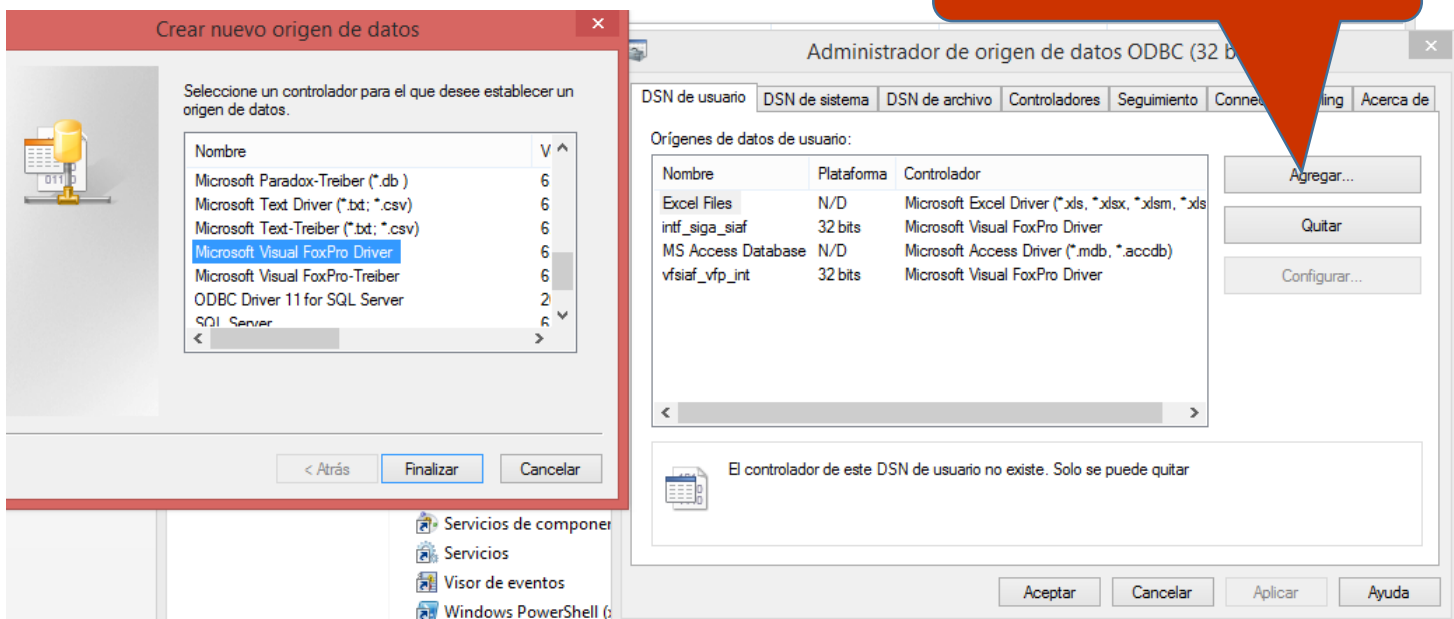
PASO 1



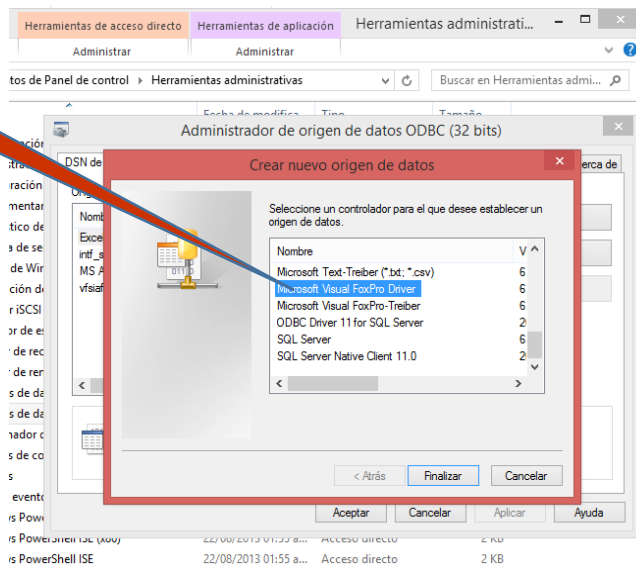
PASO 2



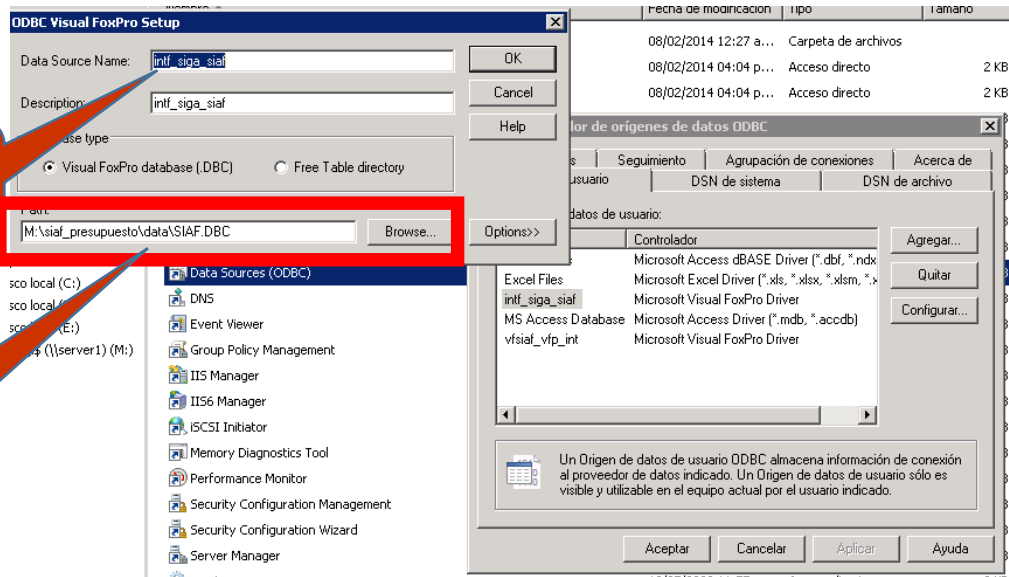
PASO 3



PASO 4



PASO 5



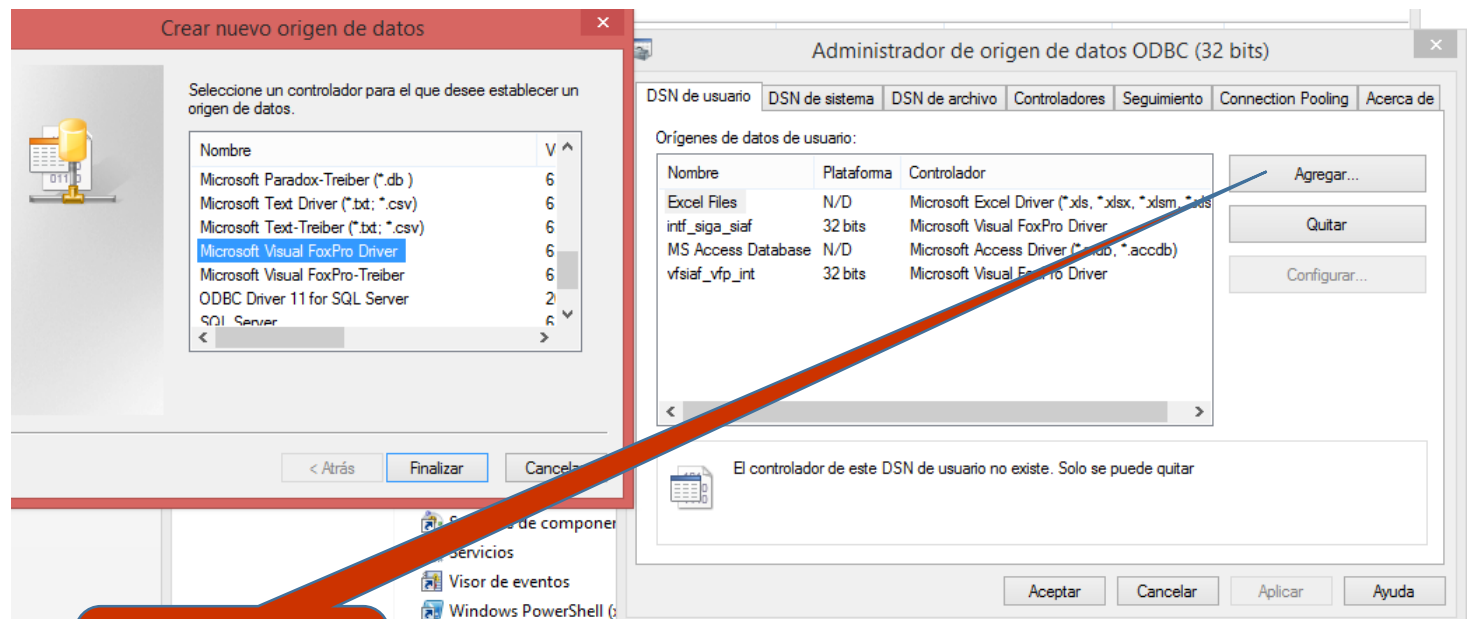
IMPORTANTE, ACA ES DE ACUERDO A LA RUTA DEL SIAF DENTRO DE LA CARPETA DATA

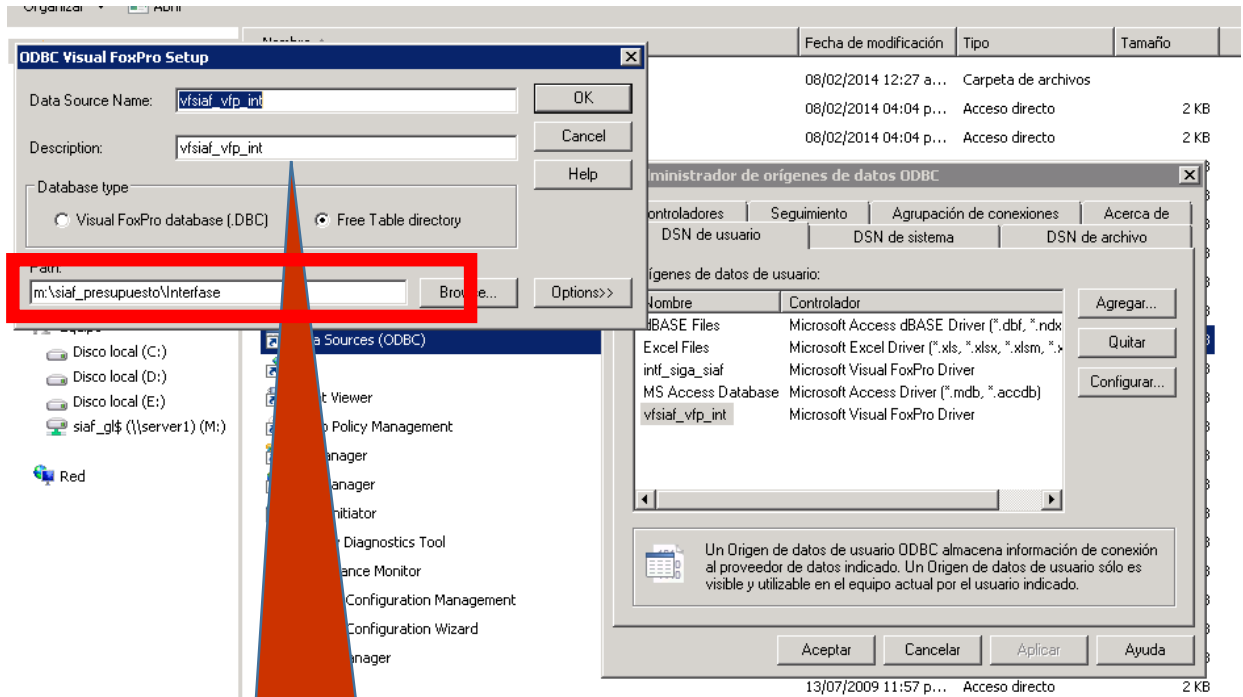
Crear nuevo origen de datos

Seleccione un controlador para el que desee establecer un origen de datos.

Nombre	
Microsoft Paradox-Treiber (*.db)	6
Microsoft Text Driver (*.txt; *.csv)	6
Microsoft Text-Treiber (*.txt; *.csv)	6
Microsoft Visual FoxPro Driver	6
Microsoft Visual FoxPro-Treiber	6
ODBC Driver 11 for SQL Server	2
SQL Server	6

PASO 7





PASO 8